

# Highters Heath Community School

## Newsletter

**Friday 31<sup>st</sup> January 2025**

### Dates for your Diary

**Friday 14<sup>th</sup> February – School closes for pupils at the normal time of 3.15pm.**

**Monday 24<sup>th</sup> February – Teacher Training Day**

**Tuesday 25<sup>th</sup> February – School reopens to pupils at the normal time of 8.45am**

**Monday 3<sup>rd</sup> March - Pupil Parliament visit to Colmers Farm Primary School**

**Thursday 3<sup>rd</sup> April – Reception visit to Attwell Farm**

**Monday 7<sup>th</sup> April – Pupil Parliament visit to Parkfield Community School**

**Friday 11<sup>th</sup> April – School closes for pupils at the normal time of 3.15pm**

**Monday 28<sup>th</sup> April – School reopens for pupils at 8.45am**

**Wednesday 21<sup>st</sup> May – Year 5 visit to Selly Manor**

**Thursday 22<sup>nd</sup> May – Year 1 visit to the Nature Centre**

### Message from the Headteacher

It has been a lovely week in school and the children have been really engaged in their learning. Next week will be art and DT week. The teachers have been preparing for this over the last few weeks and I am really looking forward to seeing the children's creations. As part of our science curriculum, the children will also be studying a famous scientist learning about their life and the great work they have done in the science world. Please ask your child what they have learnt over the next few weeks

As always if you have any questions or queries, please contact the school office using the enquiry email.

[enquiry@hightersheath.excelsiormat.org](mailto:enquiry@hightersheath.excelsiormat.org)

Thank you for your continued support,  
Mrs Aulton

### No Outsiders

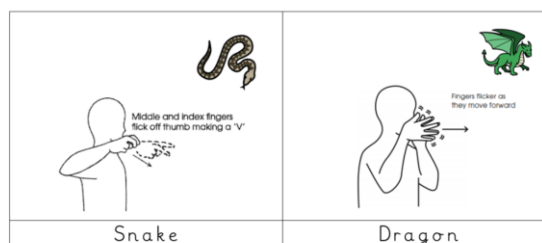
We do a No Outsiders assembly every week to prepare children for life in modern Britain. Ask your child to tell you which ones they remember this month:



### Makaton News

Wednesday was the start of Chinese New Year; this year is the year of the snake. Can you learn the signs for snake and dragon? Which year are you and can you learn the sign for your animal?

Makaton signs of the week.



## Spotlight on attendance



Thank you and well done to all the families who recognise the importance of attendance and ensure their children are in school on time every day when well enough to do so. However, whole school attendance this week is again worryingly low at only 92.1% and we don't have a single class over our target of 96%! If your child is ill and this results in them being off on a Wednesday or a Thursday, please don't think it's not worth sending them back to school for the remaining days of the week.

Learning takes place every day – including Fridays! The more days your child misses from school the wider the gaps in learning become. Children can also feel anxious about returning after a prolonged absence so sending them back to school as soon as they are well enough is a priority.

If you have any concerns regarding your child's attendance, please speak to Mrs Lindsay via the school office.

### Celebration Assembly Award Winners

This week's winners are:

Reception	Ahmed and Winner
Year 1	Albert and Peyton
Year 2	Eliza and Winner
Year 3	Kaiden and Ella
Year 4	Hiba and George
Year 5	Alexandra and Haseeb
Year 6	Ethan and Habiba

Congratulations to everyone who won a Headteachers Award this week.

### Hot Chocolate Friday Winners

Congratulations this week go to:

Reception	Alayna
Year 1	Winner
Year 2	Ava
Year 3	Mukkabir
Year 4	Carter
Year 5	Zara
Year 6	Lojain

I look forward to meeting even more children who have gone above and beyond and have been nominated for this award.



### House Points

Well done to everyone receiving house points this week. The winners are...

<b>Apollo</b>	<b>Mercury</b>	<b>Neptune</b>	<b>Pegasus</b>
5802	5914	5816	5788

Well done to **Mercury** for achieving the most house points this week.

### Attendance

Well done to everyone who has tried really hard with their attendance this week. As always, school attendance is important for your child, both in terms of their education as well as for their well-being and life opportunities.

Our attendance this week

Reception	89.9%
Year 1	94.3%
Year 2	87.5%
Year 3	94.0%
Year 4	92.1%
Year 5	90.4%
<b>Year 6</b>	<b>95.2%</b>
Whole School	95.2%

Please can you ensure your child attends every day where possible and is on time for school – doors close at 8.55am.