

Highters Heath Community School

Newsletter

Friday 7th March 2025

Dates for your Diary

**Wednesday 12th
March - Year 3 visit to
Synagogue**

**Thursday 20th March -
Year 5 visit to the
Thinktank Museum**

**Friday 21st March –
Comic Relief – Wear
something funny for
money**

**Thursday 3rd April –
Reception visit to
Attwell Farm**

**Monday 7th April –
Pupil Parliament visit
to Parkfield
Community School**

**Week beginning –
Monday 7th April –
Easter Egg
Competition**

**Friday 11th April –
School closes for
pupils at the normal
time of 3.15pm**

**Monday 28th April –
School reopens for
pupils at 8.45am**

**Wednesday 21st May
– Year 5 visit to Selly
Manor**

**Friday 23rd May –
School closes for half
term at the normal
time of 3.15pm.**

Message from the Headteacher

I wanted to start by saying well done to all the children who have taken part in our World Book Day competitions. How very inventive, creative and fun! Brilliant! After a very difficult decision the winners are:

| | |
|-----------|-----------|
| Reception | Khalid |
| Year 1 | Albert |
| Year 2 | Harry |
| Year 3 | Isla |
| Year 4 | Maliyah |
| Year 5 | Alexandra |
| Year 6 | Aaliyah |

Congratulations and well done everyone!

As always if you have any questions or queries, please contact the school office using the enquiry email.

enquiry@hightersheath.excelsiormat.org

Thank you for your continued support,
Mrs Aulton

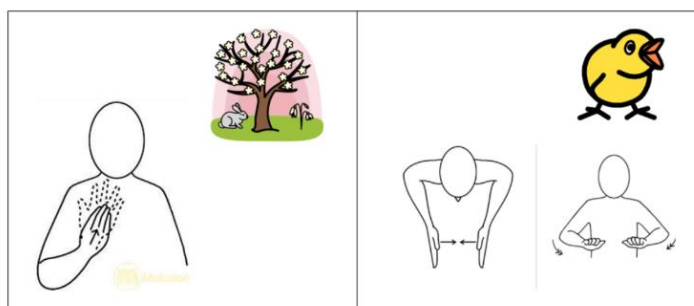
Pupil Parliament Visit to Colmers Farm Primary School

This week the Pupil Parliament members went for another full day of leadership learning and fun activities. During the day they were able to meet with all the other Pupil Parliament members from the other trust schools and discuss what they would like to do next back at Highters Heath. They also had the opportunity to take part in the Rock Kidz activities. This half term the Pupil Parliament members are looking to raise money to buy an outdoor clock for the playground to be able to see the time when out in the playground at break and lunch time.

Makaton News

Hasn't this week's weather been wonderful. Spring is definitely in the air!
Can you learn this week's signs for spring and chick?

Makaton signs of the week.



Spotlight on Attendance



We are delighted with our whole school attendance this week of 96.82%.

This means we have exceeded the goal of 96% for the first time this academic year!

As you can see from the percentages below, 5 out of our 7 classes have all achieved above 96%, which is amazing, although we are still chasing the elusive 100% which no class have achieved so far this term.

Thank you to all parents for prioritising your child's attendance at school, as it really is so important in so many ways.

If you have any concerns regarding your child's attendance, please speak to Mrs Lindsay via the school office.

Celebration Assembly Award Winners

This week's winners are:

| | |
|-----------|----------------------|
| Reception | Zakaria and Musawwir |
| Year 1 | Haris and Winner |
| Year 2 | Keira and Charlie |
| Year 3 | Ali and Esme |
| Year 4 | Subhan and Rosie-Lee |
| Year 5 | Pareeha and Alfrick |
| Year 6 | Ciaran and Saba |

Congratulations to everyone who won a Headteachers Award this week.

House Points

Well done to everyone receiving house points this week. The winners are...

| | | | |
|-----------------------|------------------------|------------------------|------------------------|
| Apollo 7521 | Mercury 7597 | Neptune 7607 | Pegasus 7615 |
|-----------------------|------------------------|------------------------|------------------------|

Well done to **Pegasus** for achieving the most house points this week.

Hot Chocolate Friday Winners

Congratulations this week go to:

| | |
|-----------|-----------|
| Reception | Jinni |
| Year 1 | Delilah |
| Year 2 | Mudabbir |
| Year 3 | Omar |
| Year 4 | Rosie-Lee |
| Year 5 | Jack |
| Year 6 | Harrison |

I look forward to meeting even more children who have gone above and beyond and have been nominated for this award.



Attendance

Well done to everyone who has tried really hard with their attendance this week. As always, school attendance is important for your child, both in terms of their education as well as for their well-being and life opportunities.

Our attendance this week

| | |
|---------------|--------------|
| Reception | 98.8% |
| Year 1 | 98.9% |
| Year 2 | 91.7% |
| Year 3 | 99.5% |
| Year 4 | 96.7% |
| Year 5 | 94.7% |
| Year 6 | 96.6% |
| Whole School | 96.7% |

Please can you ensure your child attends every day where possible and is on time for school – doors close at 8.55am.