

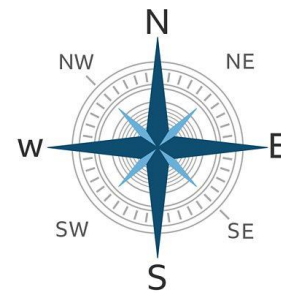
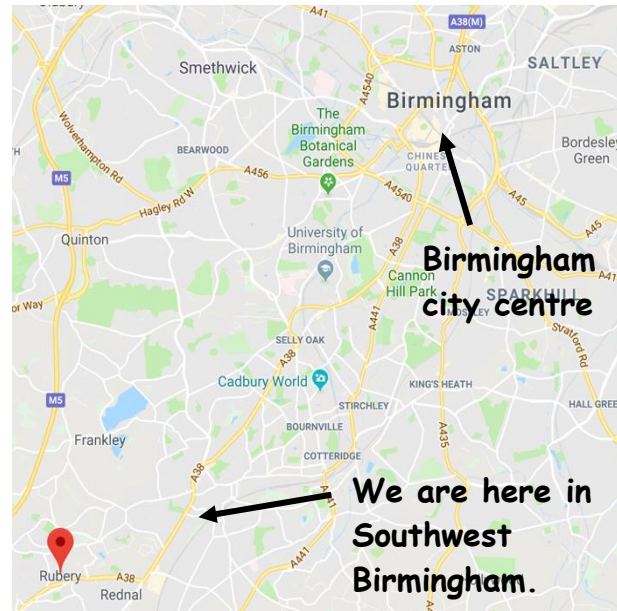
Where is Birmingham?



OUR LOCAL AREA



Year 1 Geography Unit 3



A compass rose

Dear Parents,

Our next unit is *Our Local Area*. Please help your children to prepare for this topic by helping them to learn the key words (in purple) and the facts on this sheet.

There are some homework activities on the back of this sheet. Your child can complete these at any time. Your child's teacher would love to see what they have created.

Thank you for your support.

Kind regards - Year 1

Key vocabulary

birds-eye-view - When you are looking down on something from high above.

green space - An area where grass and other plants grow e.g. a park, playing fields, gardens or play areas.

human feature - Something made by humans e.g. a church

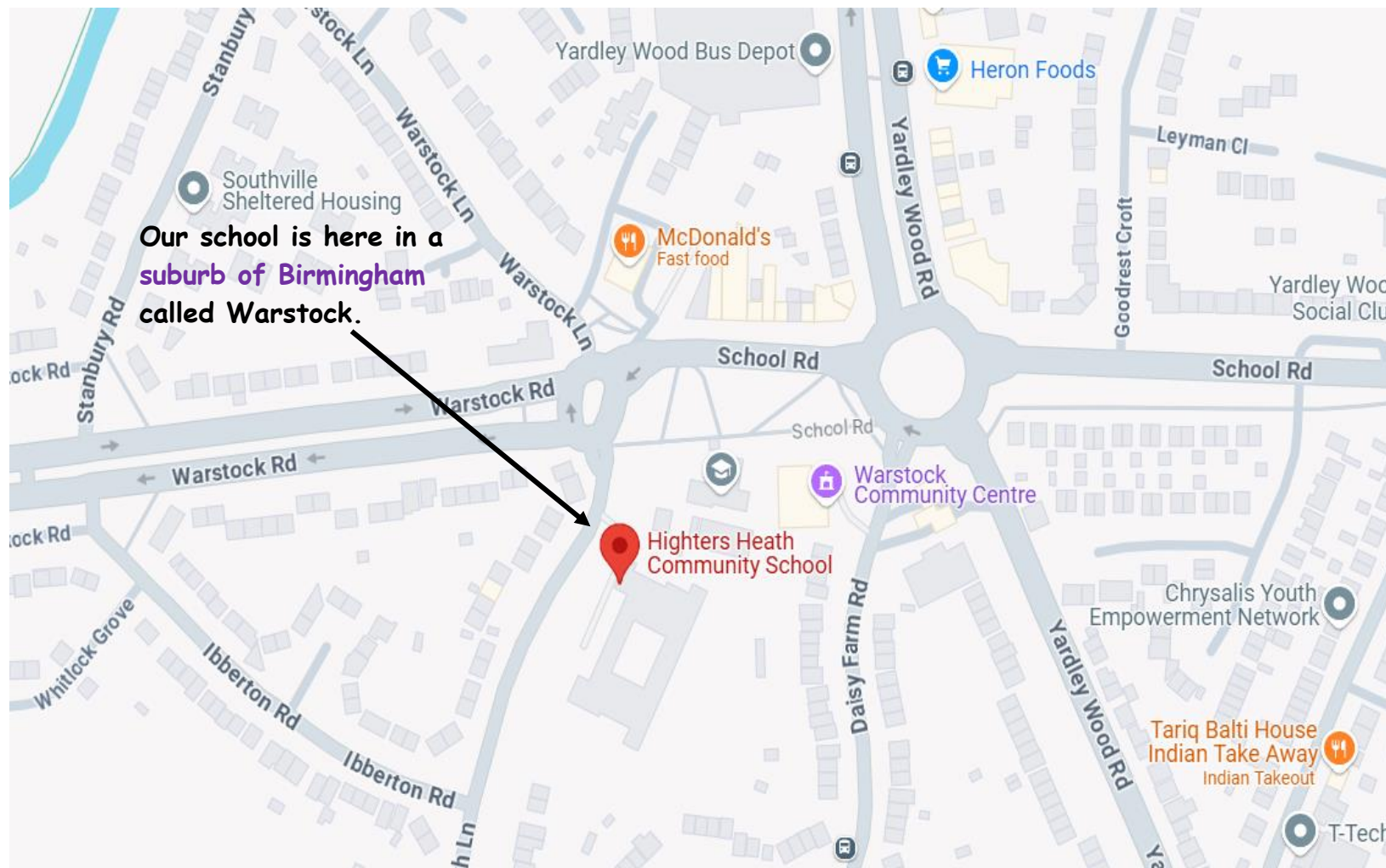
location - Where something is.

map - A representation of the whole or part of an area. This is drawn from a **birds-eye-view**.

physical feature - A naturally occurring feature e.g. a river or a hill.

suburb - A part of a city.

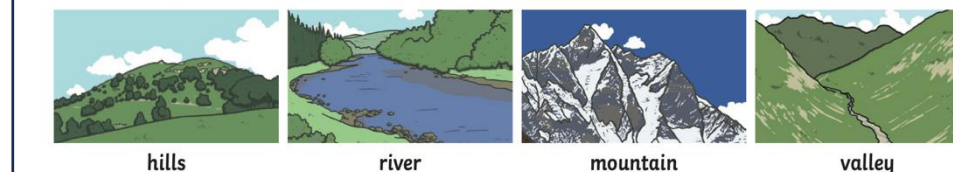
redevelopment - Rebuilding a part of a village, town or city.



Human features



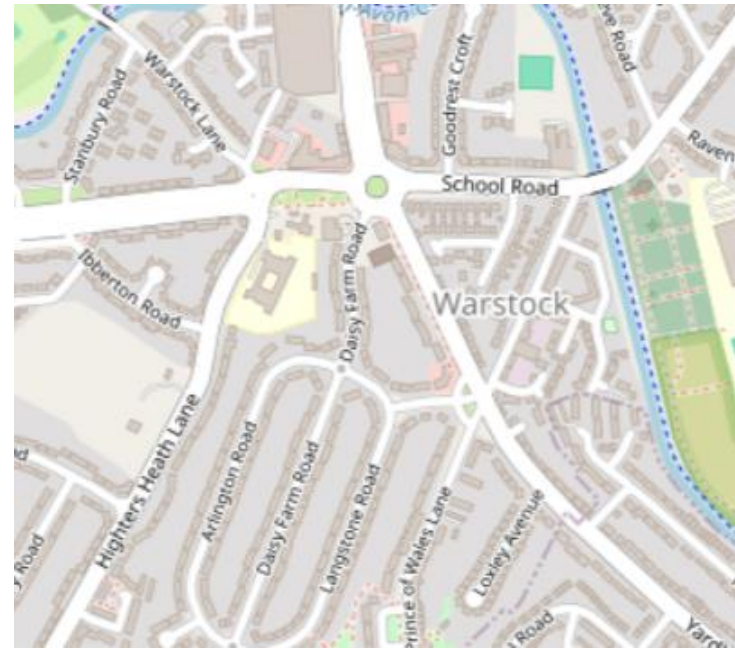
Physical features



The use of land changes over time. This is a map of the local area from a hundred years ago which shows very few buildings.



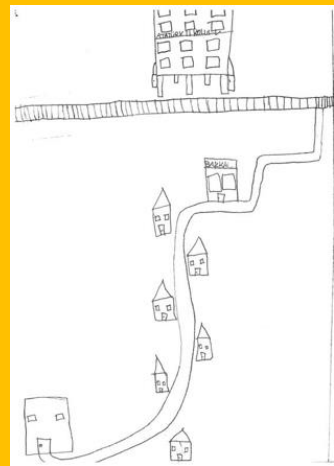
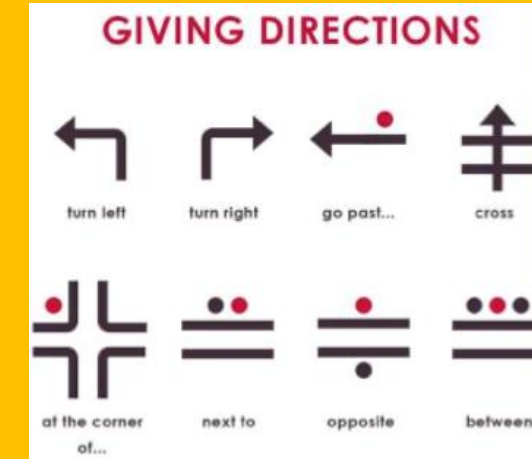
This is a recent map of the area which shows how the land has changed with many more roads, houses and other buildings, including the school.



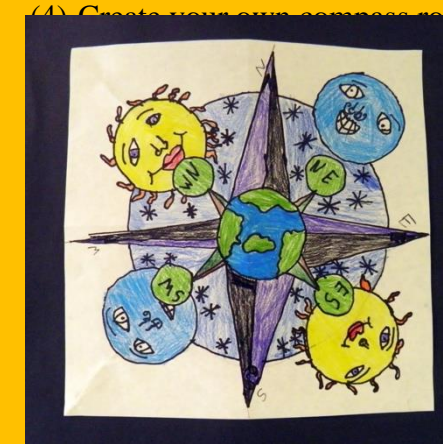
What features can you find on this aerial photo of our local area?

Homework Ideas

- (1) Create a model or draw a picture of a building in Rubery. Ask an adult to take a photo of it to help you.
- (2) Draw a map showing your route to school.
- (3) Write some instructions describing how to go from one place to another. Use the words below to help you.



(4) Create your own compass rose.



(5) Draw a birds-eye view of a room in your house.



